



# Population Health Management

Developing the Kirklees Approach to Population Health



# Population Health Definition

Population health is an approach that aims to improve physical and mental health outcomes, promote wellbeing and reduce health inequalities across an entire population.

We will use a **framework for population health** centred on four pillars:

- the wider determinants of health;
- our health behaviours and lifestyles;
- the places and communities we live in;
- an integrated health and care system.

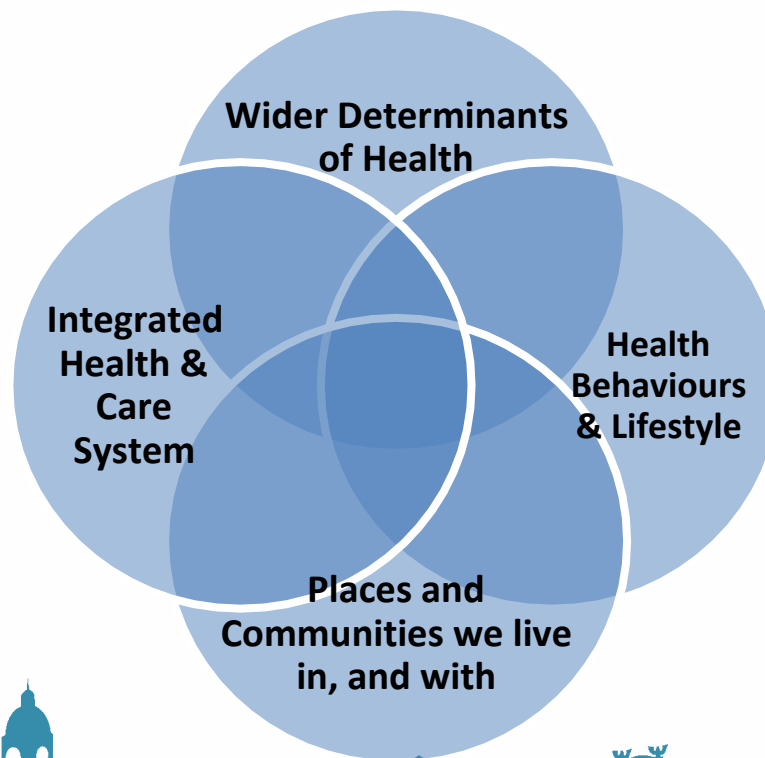


# Population Health Management definition

PHM is one of many approaches to improve population health by using data driven planning and delivery of proactive care in order to achieve maximum impact. It includes segmentation, stratification and impactability modelling to identify local 'at risk' cohorts - and, in turn, designing and targeting interventions to prevent ill-health and to improve care and support for people with ongoing health conditions and reducing variations in outcomes.



# 4 Pillars of a Population Health System



# Population Health Management

- Population health is one the core strategic aims for Integrated Care Systems.
- Is a way of working to help frontline teams understand current health and care needs and predict what local people will need in the future.
- Means we can tailor better care and support for individuals, design more joined-up and sustainable health and care services and make better use of public resources
- Uses historical and current data to understand what factors are driving poor outcomes in different population groups.



# Supports the Kirklees Outcomes

## Our shared outcomes



### Shaped by People

We make our places what they are



### Best start

Children have the best start in life



### Well

People in Kirklees are as well as possible for as long as possible



### Independent

People in Kirklees live independently and have control over their lives



### Aspire and achieve

People in Kirklees have aspiration to achieve their ambitions through education, training employment and lifelong learning



### Sustainable economy

Kirklees has sustainable economic growth and provides good employment for and with communities and businesses



### Safe and cohesive

People in Kirklees live in cohesive communities, feel safe and are protected from harm



### Clean and green

People in Kirklees experience a high quality, clean, sustainable and green environment



**Efficient and effective:** Kirklees Council works smart and delivers efficiently and effectively



# Examples in Kirklees

Cancer Screening Pilot

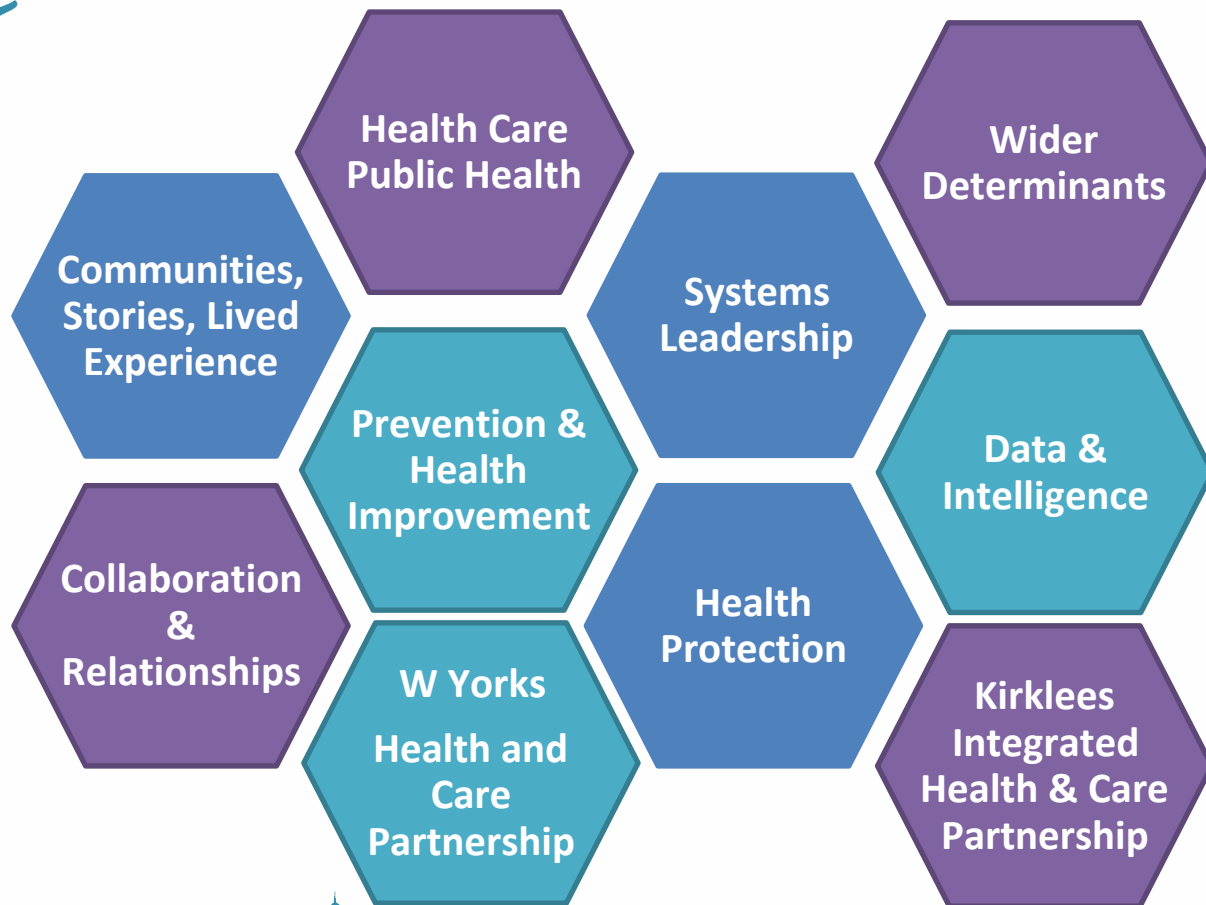
Health checks

Covid 19 Response

Primary Care Network – data packs



# Kirklees Areas of Emphasis





# Next Steps

- Collaboration and relationships
- Focus on reduction of inequalities via prevention and health improvement
- Working with not to - Community stories and lived experience
- Understanding Population Health Management at Place
- Connecting to West Yorkshire Integrated Care Partnership and the Kirklees Health and Care Partnership

